

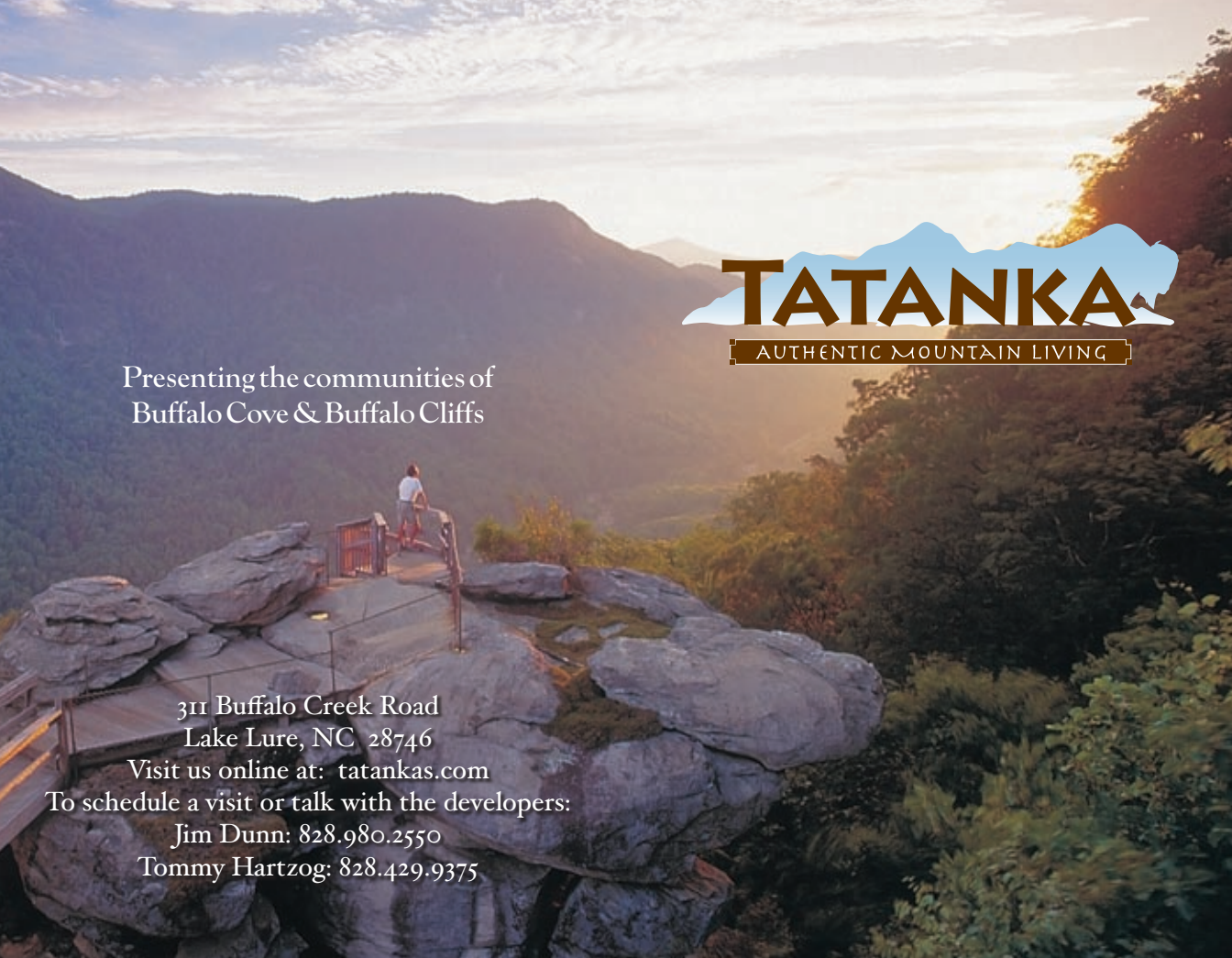
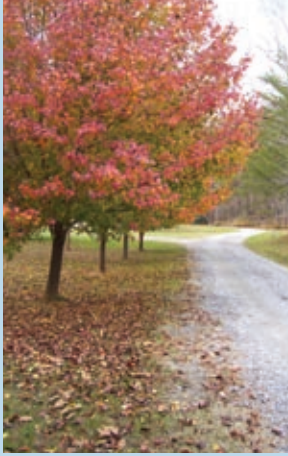
## THE COMMUNITIES

With 400 acres of mixed hardwoods and dense forest, the **TATANKA** communities of Buffalo Cove and Buffalo Cliffs are positioned on the south slope of Young's Mountain between two outstanding golf courses, Apple Valley and Bald Mountain.

Less than half a mile away is Rumbling Bald Resort, replete with championship golf, hiking trails, fishing, water sports, beach and dining.

Most of the lots are affiliated with the resort, and as such, include full membership and amenity privileges.

Ranging from 2-8 acres, each lot within **TATANKA** captures a unique aspect of the land, whether it is a mountain or valley view, clusters of mature trees, a small creek or a stone outcropping. What they all have in common, however, is that they highlight a visual delight in natural scenery around every turn.



**TATANKA**  
AUTHENTIC MOUNTAIN LIVING

Presenting the communities of  
Buffalo Cove & Buffalo Cliffs

311 Buffalo Creek Road  
Lake Lure, NC 28746

Visit us online at: [tatankas.com](http://tatankas.com)

To schedule a visit or talk with the developers:

Jim Dunn: 828.980.2550

Tommy Hartzog: 828.429.9375

## LOTS & AMENITIES

The lots are thoughtfully placed to integrate into the broader environment of **TATANKA**, to respect the trees, boulders and topography that surround it. In short, **TATANKA** pays homage to the mountain it occupies by making the natural elements the prominent feature.

Amenities include underground electricity, high speed internet, a large greenbelt of protected land, gated entry, security patrols, paved roads, community park area with rustic pavilion and outdoor fireplace, a small pond and a wealth of hiking trails.



## THE AREA

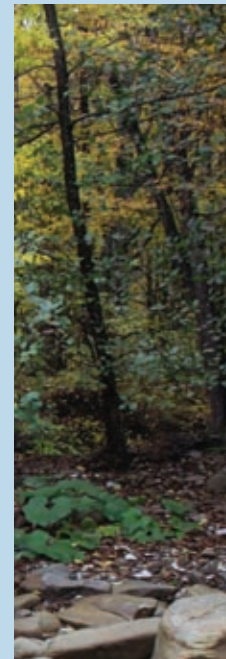
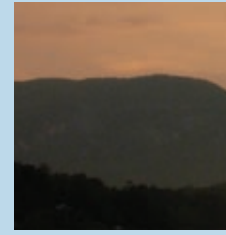
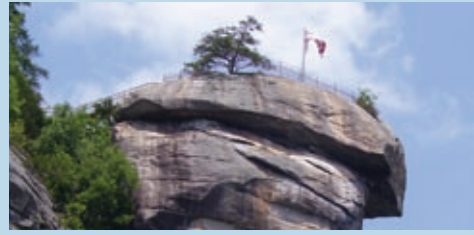
With **TATANKA** as your home base, you are ideally situated to make the most of life in Lake Lure and the Blue Ridge Foothills. Many have observed that we are the gateway to the mountains, beaches, cities and lakes – take your pick. We're less than two hours from most of it, including championship golf courses designed by golf greats Jack Nicholas, Tom Fazio, and soon, Tiger Woods.

Wherever you set your sets, you will find quaint little towns, major metropolitan cities, award-winning healthcare facilities, outstanding educational opportunities, and of course always more of our mountaintop splendor. If you want golf, it's right here. If you want snow skiing, it's less than two hours from your doorstep. Groceries and necessities are just a few minutes away. The arts, shopping, theatre, concerts and outdoor cafes are as close as a 35-minute drive, and far enough away, that Lake Lure remains your sanctuary from the bustling world.



# TATANKA

AUTHENTIC MOUNTAIN LIVING



## THE DEVELOPERS

Jim Dunn & Tommy Hartzog created **TATANKA** out of a desire to share their love for the area with other like-minded individuals who find a genuine quality of life in the embracing of nature's richest gifts. They are residents first, developers second. Their approach with both communities has been to develop land that appeals to them while preserving the natural surroundings.

Their commitment to the preservation of the area is reflected by their support of a local foundation that receives charitable contributions for every lot that sells in **TATANKA**.

These contributions become part of an endowment that always remains in this community.

